

TRIFLOW O3

PRODUCT INSTALLATION INSTRUCTIONS



INTRODUCTION	2
INSTALLATION DIMENSIONS	3
PRODUCT DRAWING	4
INSTALLATION STEPS	5 - 6
FAUCET OPERATION	7 - 8
TECHNICAL PRODUCT INFORMATION	9
MAINTENANCE	10
HOW TO CLEAN	11
TROUBLESHOOTING	12
WARRANTY	13 - 14
CONTACT	15

INTRODUCTION

The product installation instructions are written in accordance with the latest product information.

Following the sustainable development strategy of the Company, to improve continually the product's specification, performance etc subject to change without notice.

Please note: O3 water should not be used for drinking purposes.

ASSURANCE

For your reassurance, every piece of Triflow Concepts Ltd brassware is engineered from approved materials to exacting standards and hand-assembled within an ISO 9001:2000 accredited, quality assured environment.

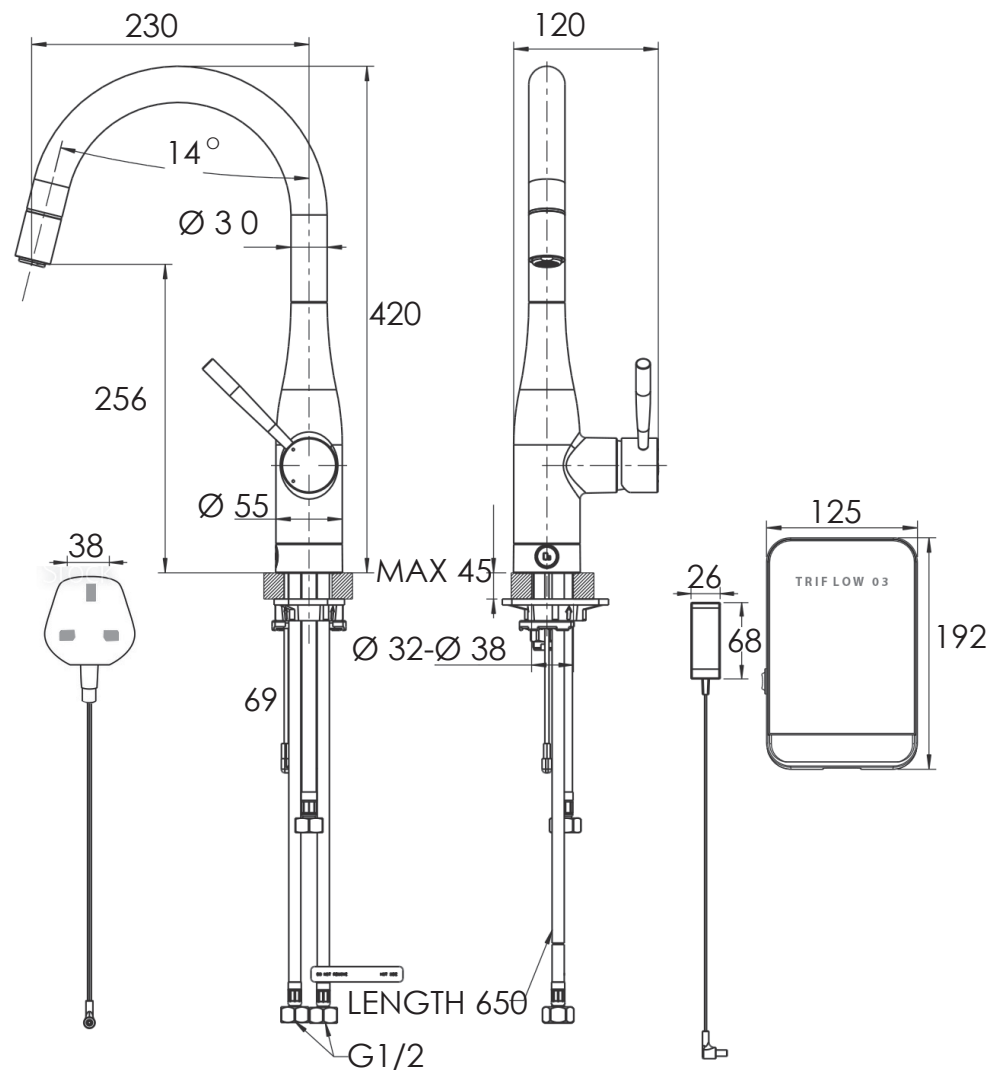
Recognised globally for its stringent, detailed standards and attention to processes, ISO 9001:2000 approval is a true hallmark of international quality.

Triflow Concepts Ltd believes in exceeding the international standards required wherever its products are sold.

This ensures the finish and quality of the product that you purchase exceeds that of other manufacturers.

INSTALLATION DIMENSIONS

UNIT:MM



HELPFUL TOOLS

- Pencil
- Impact Drill
- Tape Measure
- Spanner
- Dental Saw
- Screwdriver
- Flashlight
- Teflon tape

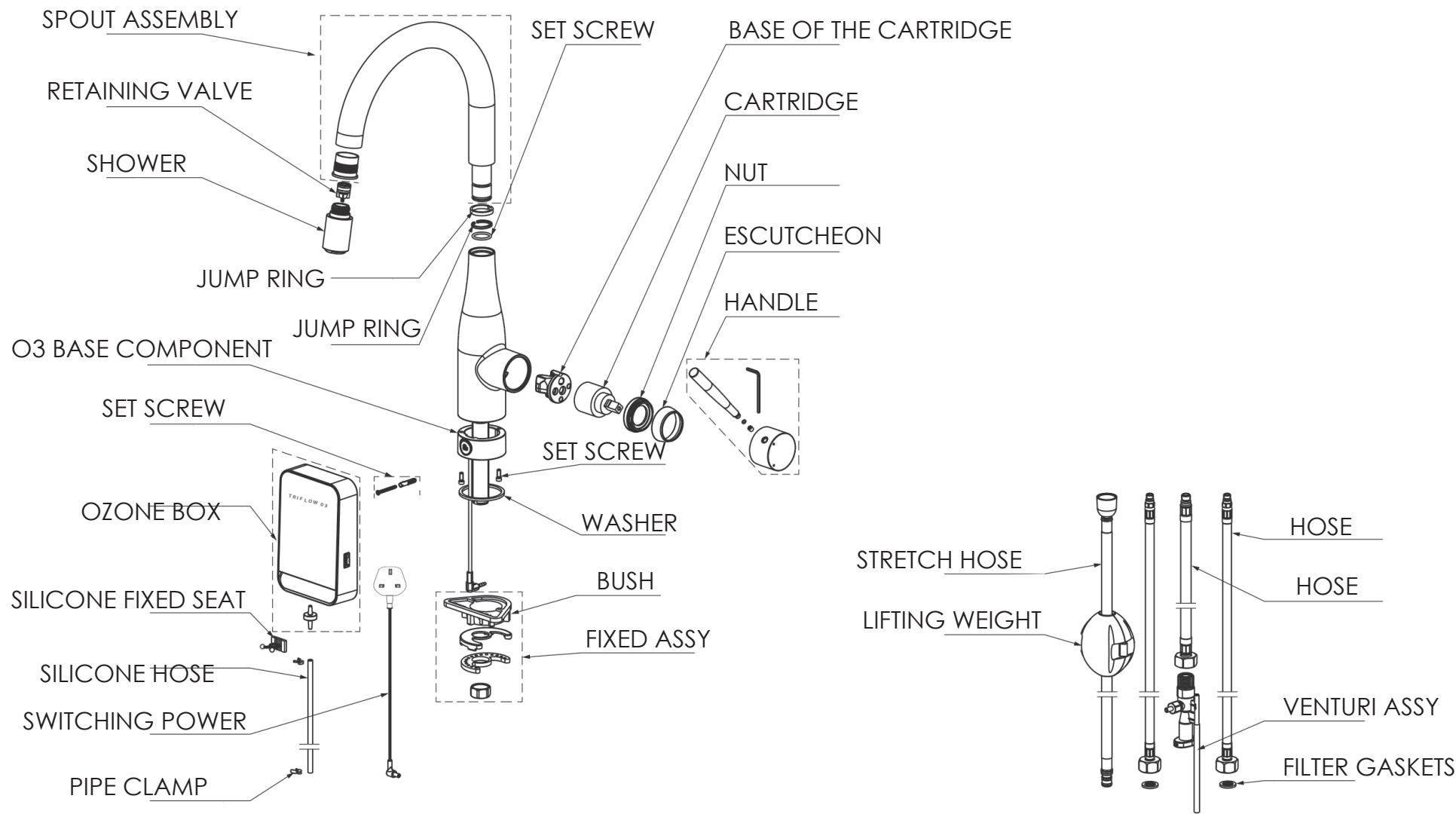
Points for attention before installation

Before installing the new mixer, it is essential that you thoroughly flush through the supply pipes in order to remove any remaining swarf, solder or other impurities.

Failure to carry out this simple procedure could cause problems or damage to the workings of the mixer.

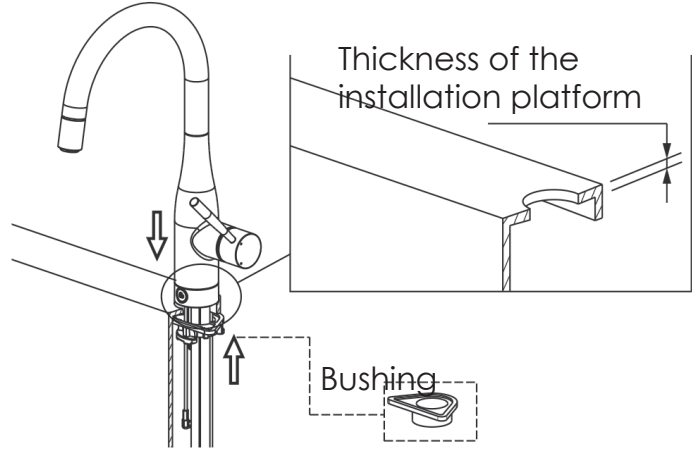
PRODUCT DRAWING

DESCRIPTION: SINGLE HANDLE KITCHEN MIXER



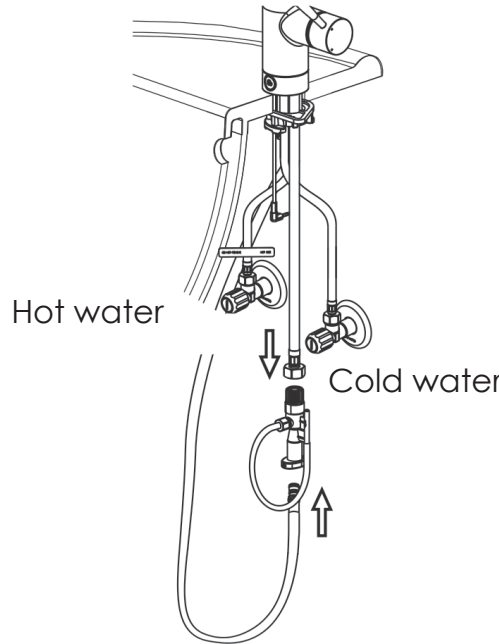
INSTALLATION STEPS

1

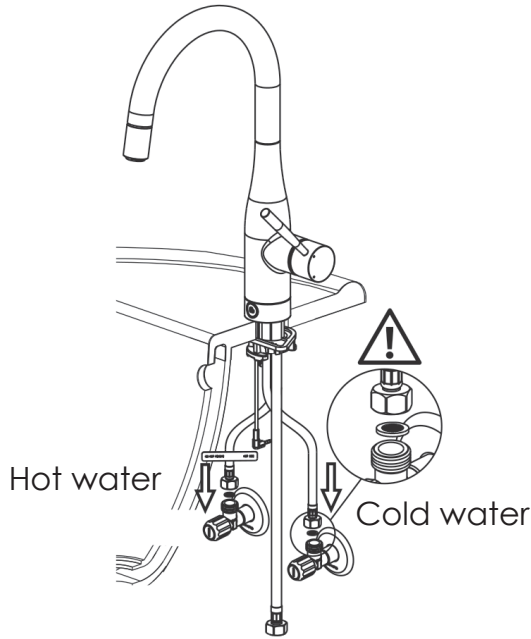


Thickness of the installation platform		
0-15mm	15-27mm	27-45mm
Should install bush	Optional to install bush	No need bush

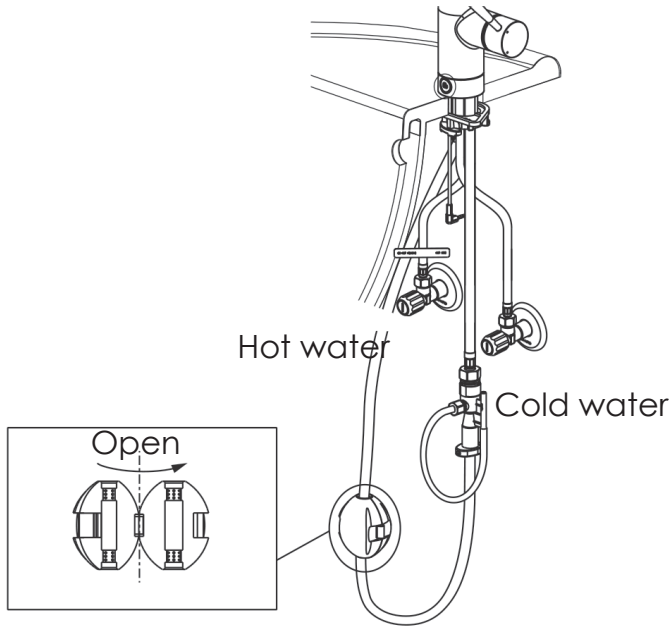
3



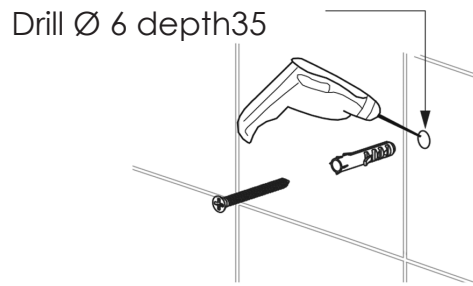
2



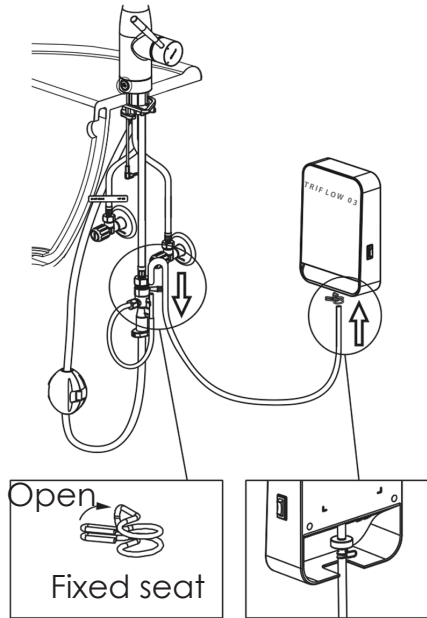
4



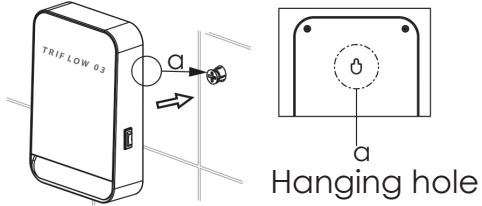
5



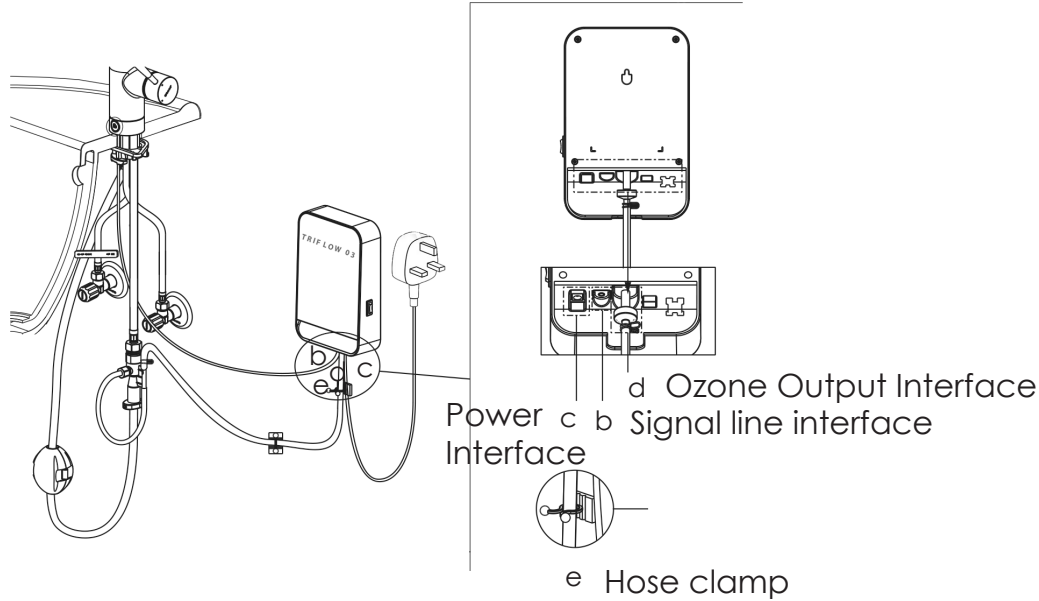
7



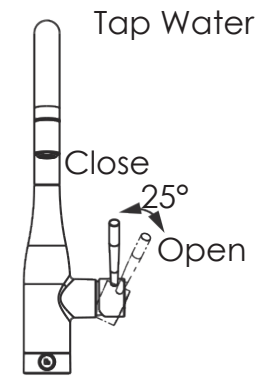
6



8



FAUCET OPERATION



Operation indication

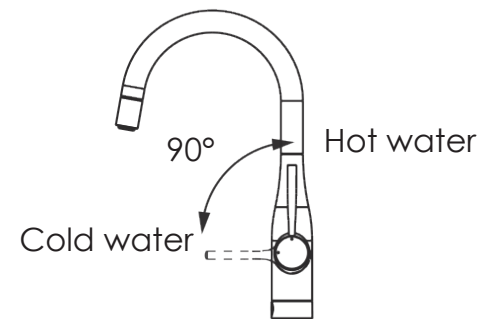
1 Power on : Plug in the plug, turn on the power switch on the side of the ozone box, the ozone box lights up red light, and the red light is the power indication ;

2 Water effluent :

1) Turn on O3 water :Open the faucet handle, press the touch key for 3 seconds, the green light on and the blue light of the ozone box is on too, the O3 water will come out. (The green light of the touch key will flicker);

2) Turn off O3 water:

- 1. O3 water; The green light turns off and switches the flowing O3 water to normal water.
- 2. Turn off the tap handle. Press the touch key for 5 seconds to turn off the blue light.



Notes:

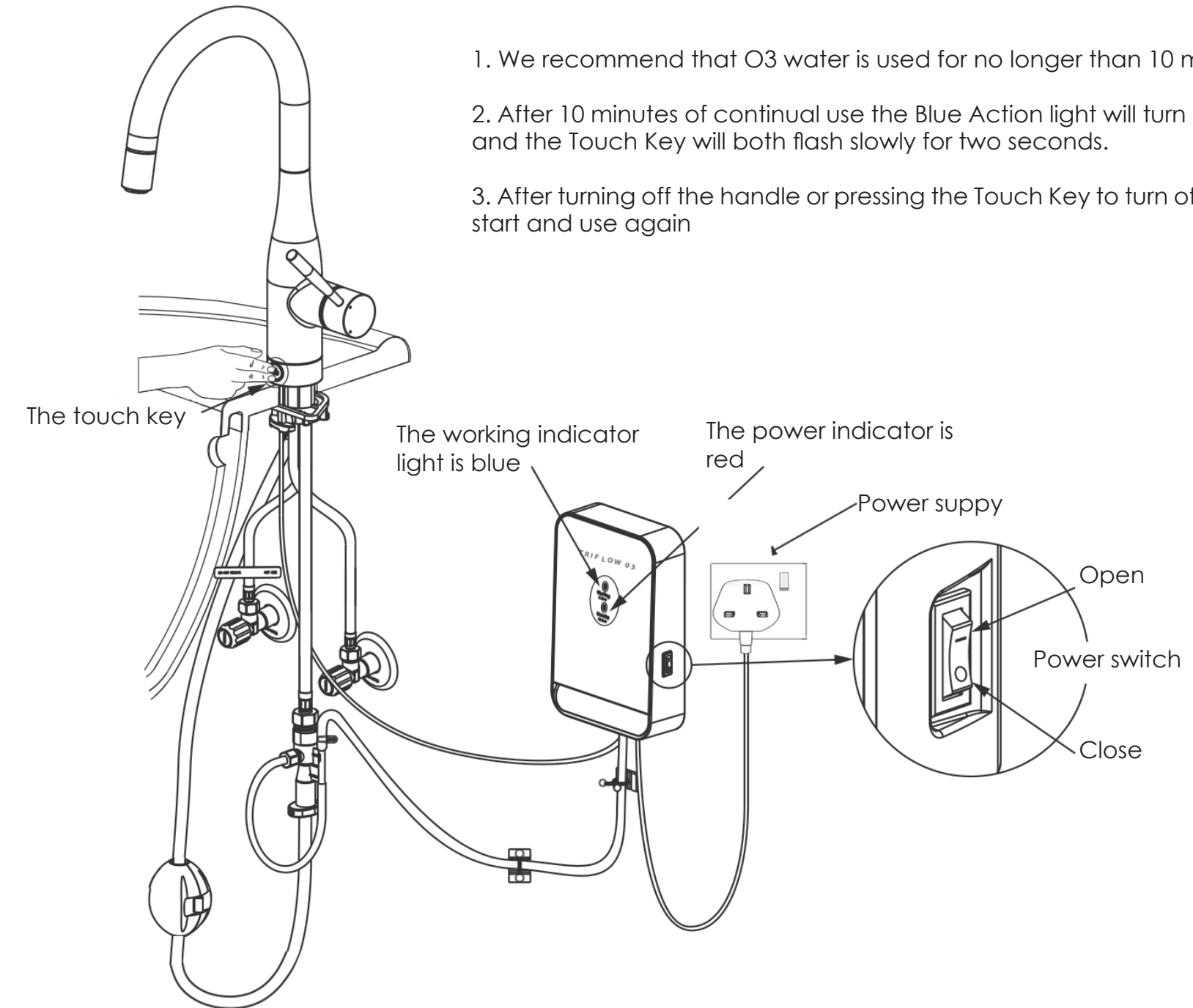
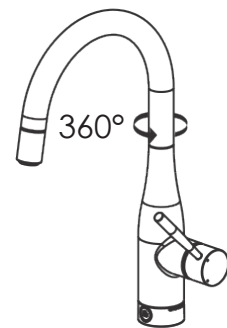
1 Ozone water cannot be drunk directly

2 In order to work properly, do not put the ozone box in a completely closed space

3 Notification for Mixer and touch key base while running out with O3 water:

- 1) The handle must be fully opened;
- 2) The water temperature must be lower than 35° C
- 3) When the touch key of the base is not sensitive, please remove the dirt on the surface of the touch key wipe it

Rotation of spout 360°



1. We recommend that O3 water is used for no longer than 10 minutes continuously.

2. After 10 minutes of continual use the Blue Action light will turn off. The Red Power indicator and the Touch Key will both flash slowly for two seconds.

3. After turning off the handle or pressing the Touch Key to turn off the O3 water. The user can start and use again

TECHNICAL PRODUCT INFORMATION

PARAMETER	
Color	White
Supply voltage A	AC 100V~240V;50/60Hz
Consumption power	MAX 6W
Reaction time	≤0,5 second
Net weight	405gm 10%
Shape size	189X125X46mm
O3 Ion Protection Device	10 minute automatic protection
The working conditions	Hydraulic pressure 1.5~5 bar ;
	Humidity 68% R.H MAX



Installation:
Flush piping system thoroughly prior to and after installation of fitting (Consider EN 806)! Fitting at temperature limiter is possible.



Function:
Check connections for leaks and check function of fitting.



Maintenance:
Inspect and clean all components and replace if necessary.
Shut off water supply for maintenance work.



When installing the cartridge, ensure that the seals are correctly seated. Tighten the screws evenly and alternately.



Replacement parts: see exploded drawing.
Care: see Care Instructions.

This technical product information is exclusively for the installer or trained specialists.

Please pass these instructions on to the user

Application:
Operation with unpressurized storage heaters is not possible.

Use for indoor public places and common residence.

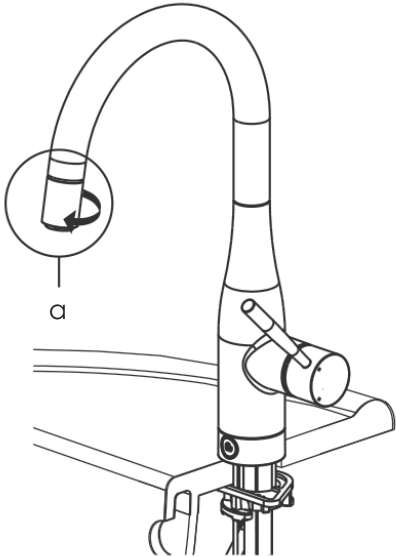
Specifications	
Flow pressure:	1.55 bar
Operating pressure:	max. 10 bar
Test pressure:	16 bar
Flow rate at 1 bar flow pressure	3-4 L/min
Hot water inlet temperature:	max. 60° C
Recommended temperature for ozone water:	5°C - 40°C
Environment temperature:	15°C - 45°C

If static pressure exceeds 5 bar, a pressure-reducing valve must be fitted.

Avoid major pressure differences between hot and cold water supply.

MAINTENANCE

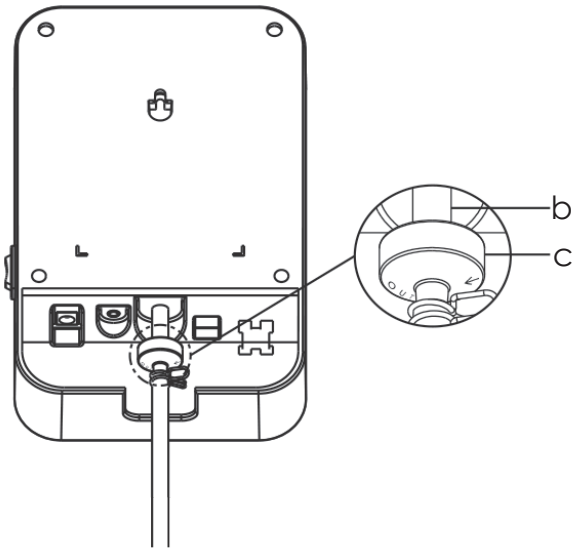
1



When O3 water cannot be generated - please follow these steps to eliminate the problem. If it still does not work then please contact the aftersales centre. (see pg15)

(1) Remove part “A” of the faucet and clean it.

2

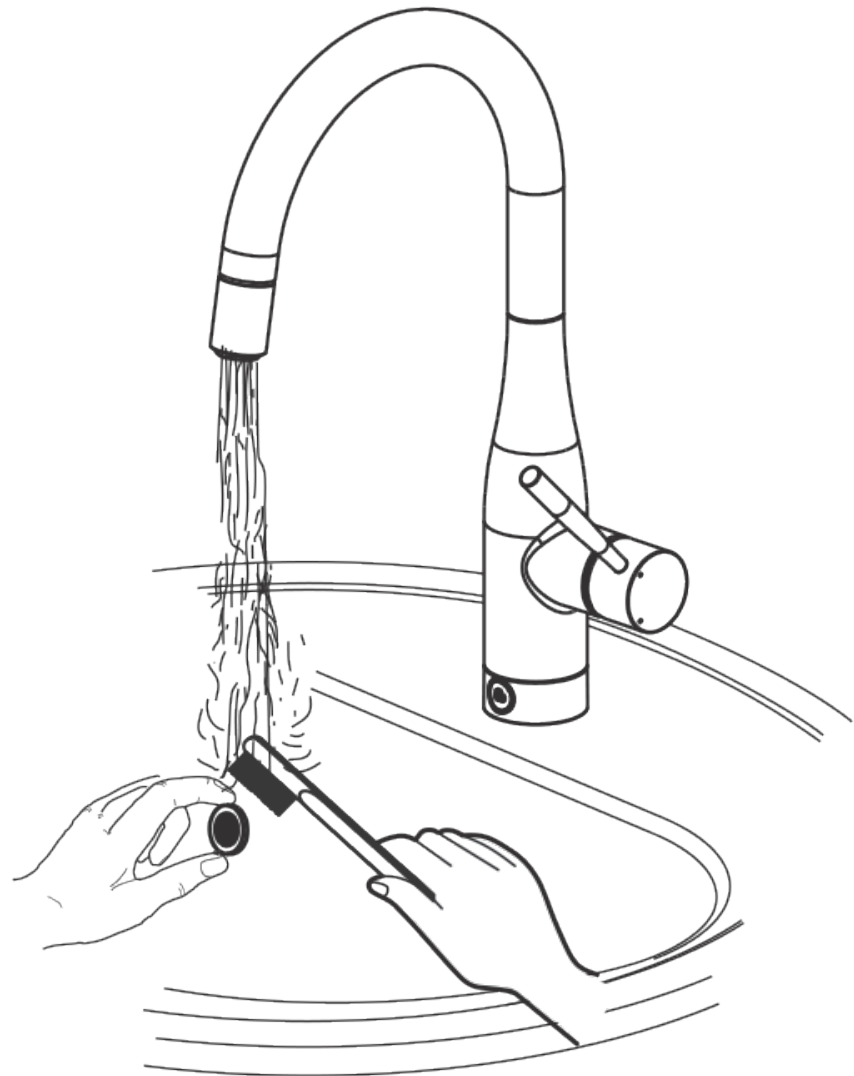


2) Replace the one-way valve at the bottom of the ozone box: Hold the rubber hose in place B, remove the one-way valve in place C and replace it with a new one-way valve.

Pay attention to the direction of one-way valve. The arrow character face outwards. After replacement, it will work.

The silicone hose from the O3 generator is likely to turn Yellow or Pink due to the O3 water reacting to the air within the hose. This is not something to worry about.

HOW TO CLEAN



Clean the washers with brush.

Note: Can't replace other types of washers.

CAUTION: Always turn water OFF before removing existing or disassembling the faucet. Open faucet handle to relieve water pressure and insure that complete water shut-off has been accomplished.

To keep the surface clean and bright, please clean the faucet regularly, please abide by the following procedures:

- 1. Use clean water and soft cloth, clean bilge and bilge membrane on the surface to the best of the abilities.
- 2. Clean the residue with the following cleansers only.
 - Soft liquid cleanser.
 - Colorless glass cleanser, totally soluble powder cleanse without abrasive capability. (Mixed by instructions.)
 - No abrasive cleanser waxes.
 - Never use cleanser, emery cloth or handkerchief which can rub.
 - Never use cleanser containing abrasive cleansers, ammonia, bleach, acids, waxes, alcohol, solvents or other products not recommended for chrome.
- 3. After cleaning, use clean water to flush out all cleanser immediately and drying with soft cotton cloth.
- 4. Carefully dismantle the aerator regularly, rinse under clean running water until any loose debris is cleared to avoid the influence to water outflow.

TROUBLESHOOTING

SYMPTOM	WHEN DOES IT HAPPEN?	ACTION / POSSIBLE CASUE
The Ozone box's blue light is not on or the touch key's green light turns on and then goes out by itself	Initial Installation	(1) Low water pressure
	Initial Installation	(2) The supply hose is bent
	Initial Installation	(3) The handle is not fully opened
	Use for long time	(4) The washers is blocked
The touch key is not working	Initial Installation	(1) Check whether the supply of Ozone box is working (check whether the switching power is plugged in and whether the AC power supply is working or not)
	Initial Installation	(2) The signal line connector of the base is not fully inserted
	Initial Installation	(3) Touch time too short (less than 3 seconds)
	Use for while	(4) When the touch key of the base is not sensitive, please remove the dirt on the surface of the touch key and the signal line connector of the base should be pulled out for 10 seconds and then inserted back, the mixer will reset automatically
	Use for while	(5) Clean the tap base when water around
	Use for while	(6) Turn off the power for the mixer and Ozone box before cleaning
Touch key turns on by itself.	When touch key is wet	Dry touch key with clean cloth and power off

WARRANTY

Our products are manufactured utilising industry leading technology, quality, and design. As a result, we are proud to offer the following warranty:

- Your Triflow tap, apart from the surface finish, is guaranteed by us (Triflow Concepts Ltd) against any manufacturing defect for a period of 2 years from the date on which you purchased it from us.
- Your Triflow Ozone Generator is guaranteed for a period of 2 years from date of purchase.
- The surface finish of Triflow products is guaranteed for 1 year from the date of purchase.

Should a fault occur within the warranty period; a free replacement part can be issued. If this does not resolve the problem, a replacement product will be supplied.

Any replacement excludes delivery and any labour re-installation costs.

This warranty applies only to the original owner, providing the product has been installed in accordance with our instructions, used as recommended and in normal residential application. In the event of a warranty claim, the owner will be required to provide proof of purchase. This warranty covers all components necessary to restore the product to good working condition. Triflow Concepts Ltd reserves the right to inspect the installation prior to the replacement of the product or component part.

This warranty does not cover misuse or abuse, accidental damage, scuffs or scratches, abnormal usage, negligence, or damage caused by improper maintenance or cleaning. Normal wear of parts is excluded from the warranty. Damage caused by impurities or acts beyond our control are not covered. Any product or part thereof which has been repaired or altered in any manner outside of Triflow Concepts Ltd factory, unless previously authorised in writing by Triflow Concepts Ltd, will void the warranty.

Any replacement excludes transportation and any labour re-installation costs. This warranty does not allow recovery of incidental or consequential damage, and Triflow Concepts Ltd accepts no liability for such damages.

The Triflow Concepts Ltd warranty is limited to the above condition and to the warranty period specified herein and is exclusive. Triflow Concepts Ltd DISCLAIMS all other warranties, expressed or implied, including IMPLIED WARRANTIES OF MERCHANTABILITY AND/OR FITNESS FOR A PARTICULAR PURPOSE.

Note: If Ozone water is used in conjunction with a Stainless Steel sink this material must be made of SS304 grade or above.

Where the Goods are sold under a consumer transaction as defined by the Consumer Transactions (Restrictions and Statements Order 1976) the statutory rights of the Buyer are not affected by these Conditions.

Subject as expressly provided in these conditions and except where the Goods are sold to a person dealing as a consumer (within the meaning of the Unfair Contract Terms Act 1977) all warranties, conditions or other terms implied by statute or common law are excluded to the fullest extent permitted by law. The address for returns is:

Customer Services, Triflow Concepts Limited, Global House, 95 Vantage Point, The Pensnett Estate, Kingswinford, West Midlands DY6 7FT, UNITED KINGDOM



TRIFLOW CONCEPTS

Technical Support: +44 (0)800 999 3959

You can talk to us: 8:30am - 5:00pm Monday - Thursday

8:30am - 4:00pm Friday

You can email us at: info@triflowconcepts.com