

Matrix R0 - 1.5 Bowl

Not handed - Stainless Steel

abode

	Abode code:	AW5012-2
	EAN 13 Barcode:	5060048387476
	Specification version:	1
	Finish:	Brushed Finish

Included parts:				
 <p>2 x AX1001 (m) 90mm (1.5") Orbit manual basket strainer waste - short bolt</p>	 <p>1 x AX1009-1 (m) 2 Bowl Pipework</p>	 <p>2 x AX1017 (m) Undermount fixing clips x 4</p>	 <p>2 x AX1102 (m) Rectangular overflow (90x30mm vertical)</p>	 <p>1 x AX4001 (m) Fitting & care instructions & data sheet - st/st undermount</p>

Compatible parts / accessories:				

Packing summary: <ul style="list-style-type: none"> Packaging Type: Boxed Packaged size L x W x D: 860 x 575 x 265mm Boxed weight: 11.2kg 	Materials & workmanship warranty summary: <ul style="list-style-type: none"> Sink materials & workmanship 10 years. Waste kits 1 year. Connecting pipework 1 year. 	Care instructions summary: <ul style="list-style-type: none"> Clean the products regularly using soapy water and a non-abrasive cloth, regular cleaning will prevent the build-up of lime scale and dirt. Avoid contact with corrosive or abrasive substances. After cleaning rinse thoroughly with clean water then dry, for more detail see supplied booklet or www.abodedesigns.co.uk
---	--	--

Mounting Dimensions:						
Type of Installation:	Installation type recommended (true) or not?	Recommended minimum base unit mm (20mm wall thickness)	Overall recessed fitting width mm (required for bowl(s), tap hole, overflow)	Cut out size (length x width x corner radius mm)	Minimum – Maximum worktop thickness mm	Additional fitting notes
Inset			699		0 - 5	
Undermount	true	800	699	702 x 404 x R5		
Flushmount			699			
Apron front		800	699	702 x 404 x R5		

Product dimensions and installation information:



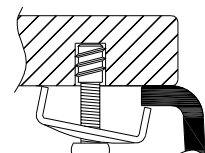
Note: symbol indicates position of acoustic pad on stainless steel sinks only

Overall product size: 736 x 436 x 205, 10mm corner radius



*Important, fabricator / installer notes for undermount & Flushmount sinks:

The cut out size indicated is aligned with outside edge of the bowl top radius (similar to the example below).



You should confirm with your client if the worksurface cutout is to be cut flush, inside or outside this suggested perimeter shape & size.

If you create the cutout smaller or larger than the indicated size then the fit of the accessories may be affected and should be physically checked.

General:

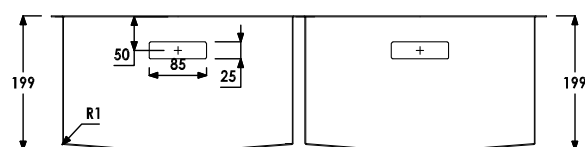
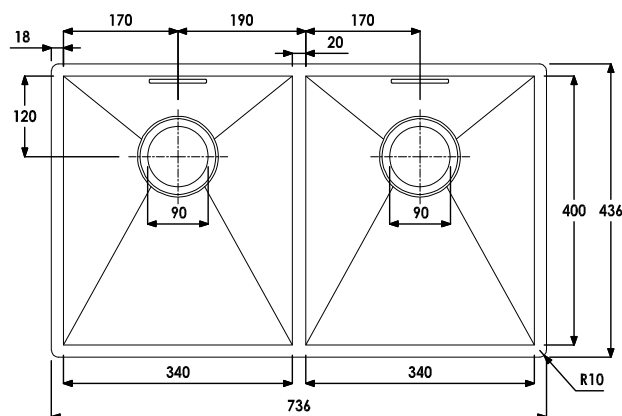
All details are provided in good faith but do not include the tolerances of the material or manufacturing process.

We request that a test cutout is made in scrap timber and checked against the actual sink to be installed before committing to cutting the final worksurface.

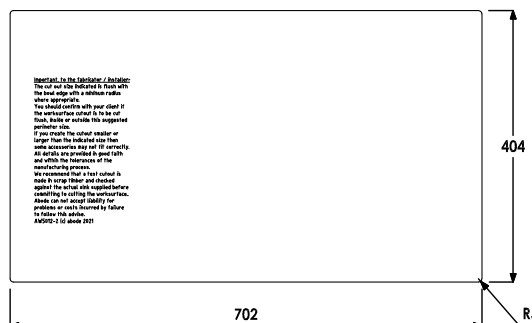
Abode can not accept liability for problems or costs incurred by failure to follow this request.

Note: the dimensions on ceramic fireclay products are subject to wider tolerances due to the nature of this natural material and the firing process.

CAD cutout files can be downloaded from www.abodedesigns.co.uk



UNDERMOUNT CUT OUT



Additional notes:

Important: Please check cut out details carefully before cutting worktops, size shown is flush to bowl edge

Bowl & drainer details:	Bowl 1 (typically main bowl):	Bowl 2: (typically ½ or ¾ or 2nd main bowl):	Bowl 3:	Drainer (left)	Drainer (right)
Bowl Size Width x Length x Depth x Radius (mm)	340 x 400 x 199 x 1	340 x 400 x 199 x 1			
Bowl floor radius (mm)	1	1			
Wastehole diameter (mm)	90	90			
Overflow type	Rectangular flush	Rectangular flush			
Wall thickness (gauge mm)	1	1		1.2	
Bowl texture / finish	Brushed stainless	Brushed stainless		Brushed stainless	
Bowl volume (apx. litres)	20.2	20.2			