

FOLLOW US



Thank you for your valued support and please help us spread the word through social media with images and comments, once your product has been installed.

www.bidburyandco.com

   /bidburyandco

Team Bidbury
EXCLUSIVE

REGISTER TODAY TO RECEIVE YOUR FREE EXTENDED WARRANTY

IT'S AS EASY AS 1,2,3!

www.bidburyandco.com/team-bidbury

Bidbury & Co

SHERSTON



INSTALLATION INSTRUCTIONS

INTRODUCTION



PLEASE READ THESE INSTRUCTIONS CAREFULLY AND KEEP IN A SAFE PLACE FOR FUTURE REFERENCE.

This guide contains general installation instructions on how to install your product. However, it is important that the item is installed by a qualified and experienced professional. Therefore reliance on these instructions will be minimal.

Care taken during the installation will ensure long life and trouble free operations from the tap.

It is extremely important that all pipe work is flushed thoroughly after installation to avoid damaging the ceramic discs. It is recommended that the both hot and cold valves/handles on the tap are opened fully before you turn the water supply back on. This will ensure no debris will get lodged in the disc, causing possible damage.

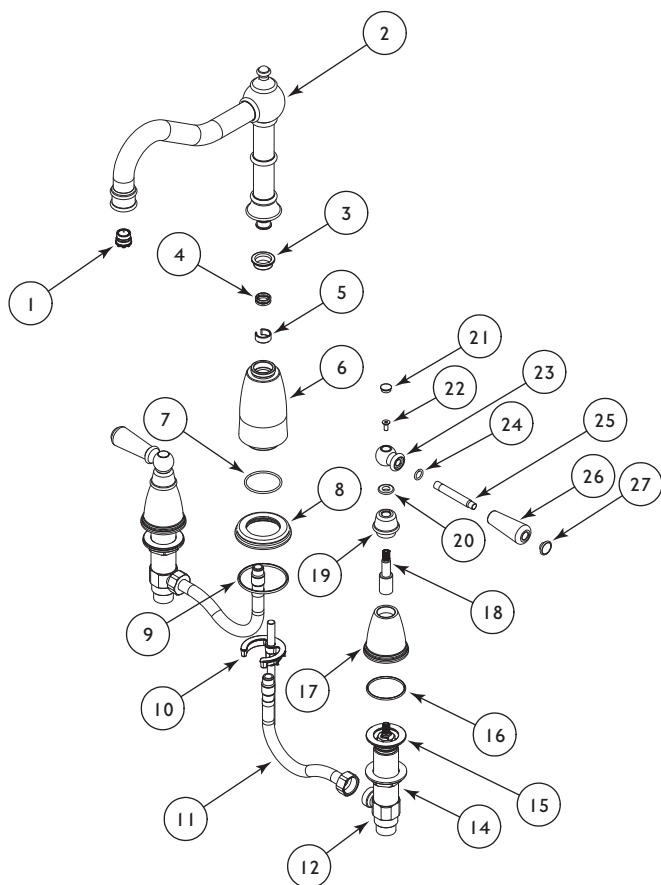
SPARE PARTS LIST



The set comprises of the following:

ITEM	QTY	DESCRIPTION
1	1	Aerator
2	1	Spout Assembly
3	1	Connector Bushing
4	2	O-Ring
5	1	Connector Ring
6	1	Mixer
7	1	O-Ring
8	1	Plate
9	1	O-Ring
10	1	Fixing Kit
13	1	RTC Side Valve
11	2	Connection
12	1	LTC Side Valve
14	2	Nut
15	2	Washer
16	2	O-Ring
17	2	Side Valve Cover
18	2	Handle Extension
19	2	Cover Cap Assembly
20	2	Handle Ring
21	2	Indice
22	2	Screw
23	2	Lever Handle
24	2	O-Ring
25	2	Lever Stem
26	2	Ceramic handle
27	2	Ceramic Nut

Check that all parts are present.



INSTALLATION



Ideally you will have isolating valves already fitted to your supply pipework. If so close both the hot and cold isolation valves and open the tap levers to release any trapped water/pressure. You can now disconnect the old tap. If you do not have isolating valves fitted to the existing tap, you will then need to shut off the main water supply by following the next step.

First shut off any stop cock on your hot water system then, with your mains cold water stop cock also closed, open the lowest hot and cold taps in the house and allow to run until both hot and cold pipes are empty (the hot water storage cylinder always remains full but cannot empty due to being shut off).

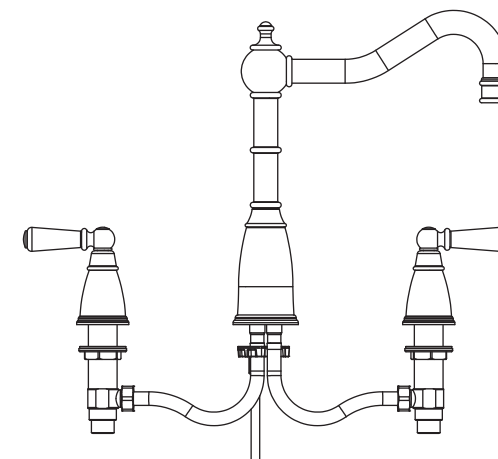
Fitting isolating valves to the inlet feeds is recommended for ease of maintenance.

REMEMBER TO TURN OFF THE MAINS WATER SUPPLY BEFORE CONNECTING TO ANY EXISTING PIPE WORK.

- Use the rubber seal and horseshoe plate provided to install the spout onto the sink or work surface
- Take hold of the main body (Item No:6) and unscrew the whole assembly from the brass valve that is normally located under the work surface/sink.
- You can now pass the valve through the hole from below and screw the main body back into position.
- When tightening the fixing bolt on the hot and cold levers, ensure the handles on the top are positioned correctly and that the water outlet on the valve is pointing inwards.
- Connect the hot and cold flexible pipes to the valves and then into the base of the spout, ensuring they are NOT over tightened as this can cause damage to the rubber seals
- When installing the handle assembly, ensure the handles are positioned so they are closed to the sides and open to the front
- Connect hot and cold water supplies to the bottom inlet on each valve.
- Check for joint and connection leaks, turn on the water supplies and open both taps letting the water flow for a few minutes
- Remedy if required

ENSURE CORRECT PRESSURE BEFORE FITTING:

- Recommended operating pressure 1.0 – 2.0 Bar
- Maximum operating pressure 3.0 Bar



REGULAR DAILY CLEANING



The surface finish we use on our taps is very durable and hard wearing. However, care should still be taken when cleaning them. They should be cleaned only with warm soapy water followed by rinsing with clean water and drying with a soft cloth. All finishes are vulnerable to strong cleaning agents and therefore substances such as household cleaners, disinfectants, denture cleaners and hair dyes can cause damage to the surface and should be avoided.

For more detailed information on taking care of your Bidbury tap visit:
www.bidburyandco.com/care-instructions/